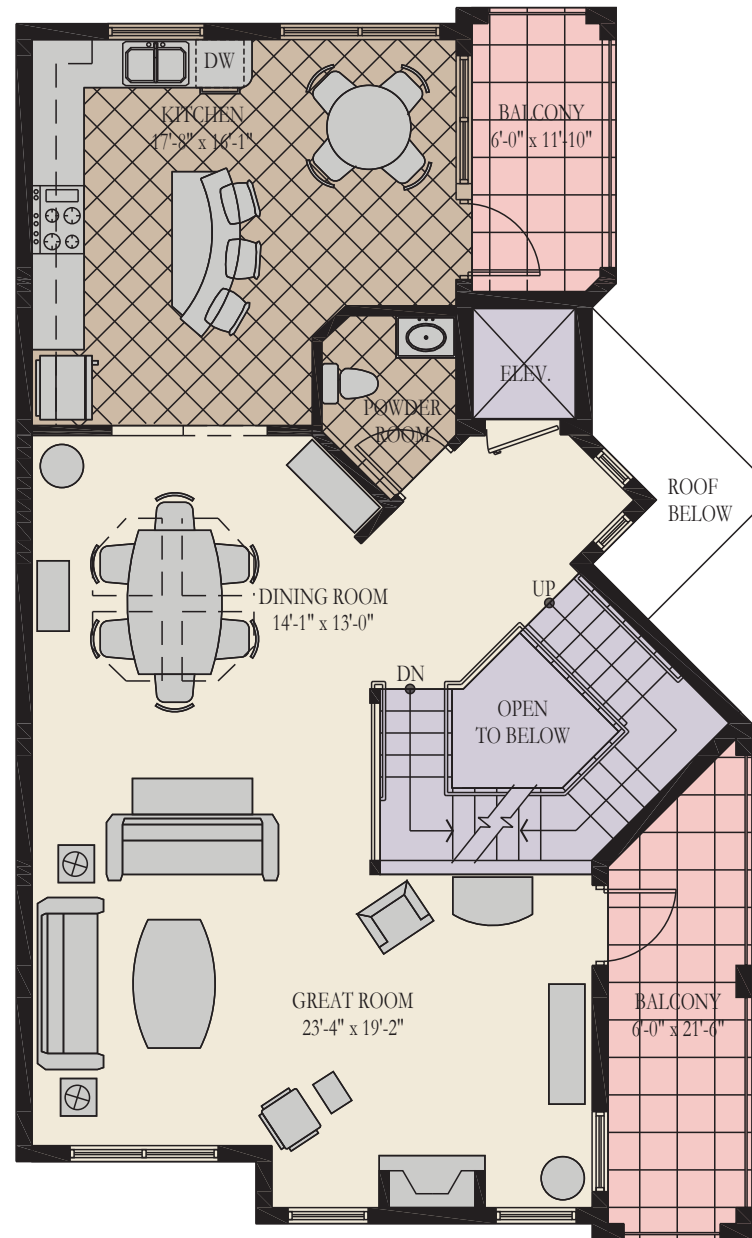
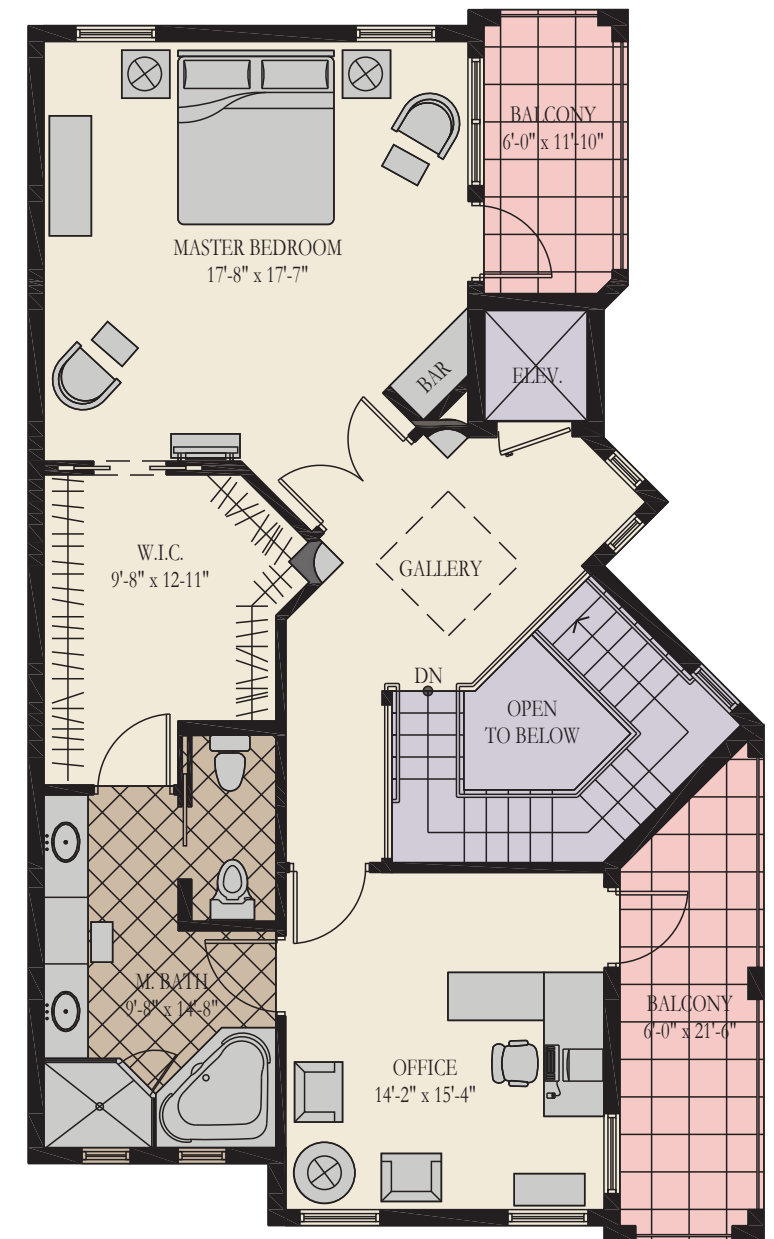


FIRST FLOOR PLAN



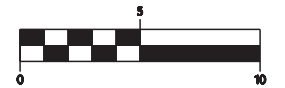
SECOND FLOOR PLAN



THIRD FLOOR PLAN

LUGANO

LIVING AREA = 3075 s.f.
 GARAGE AREA = 459 s.f.
 BALCONY AREA = 366 s.f.
 PATIO AREA = 207 s.f.



Portofino Grande
 AT TOWN CENTER

