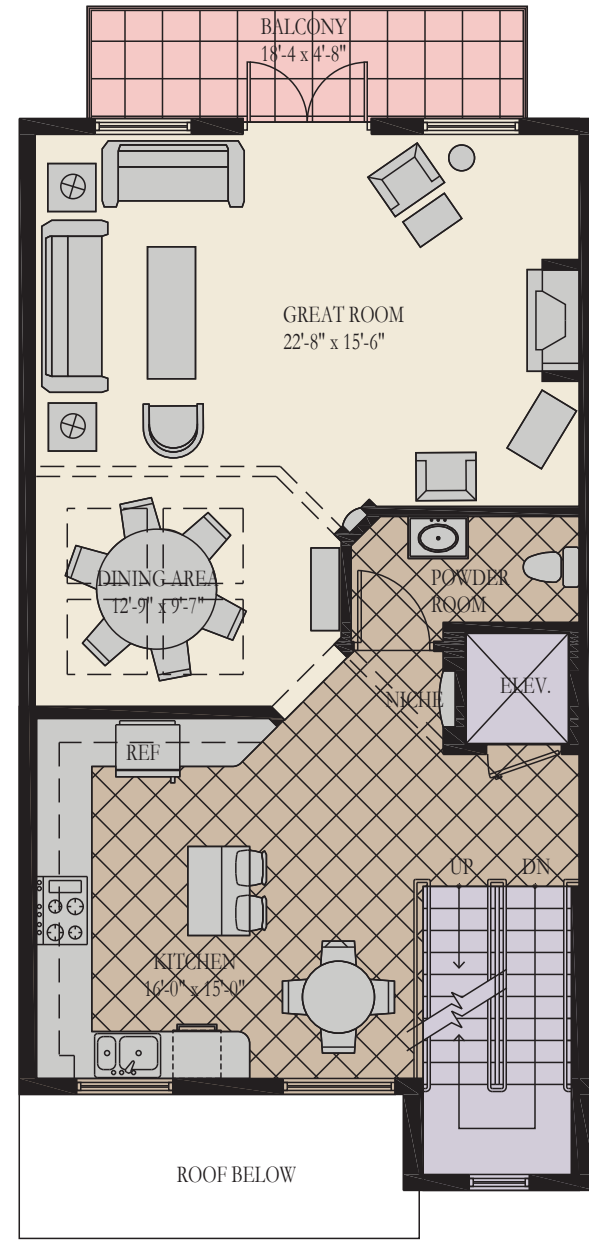
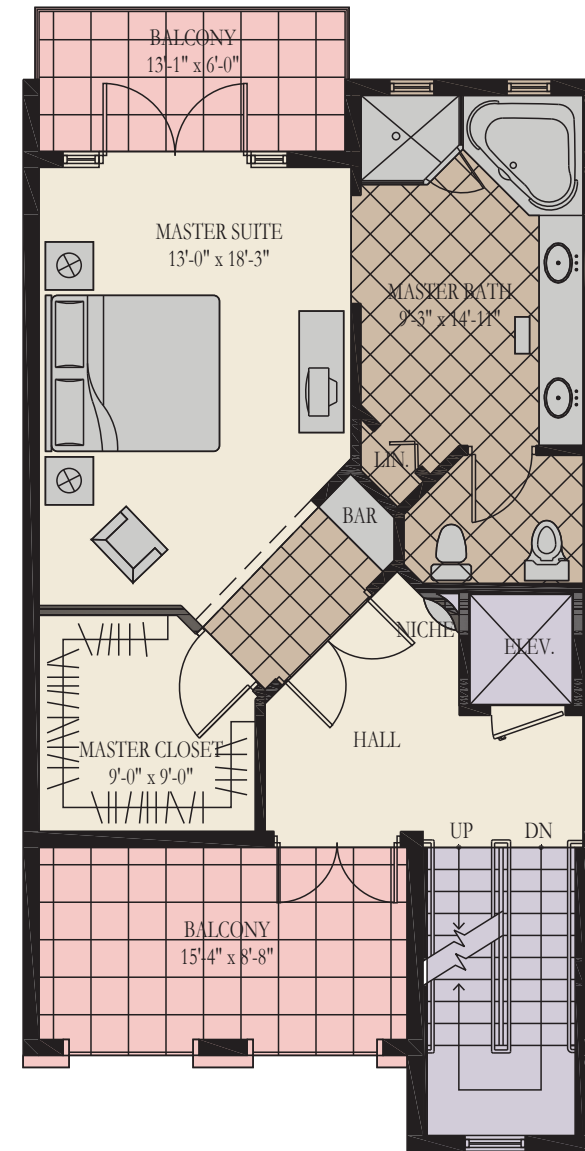


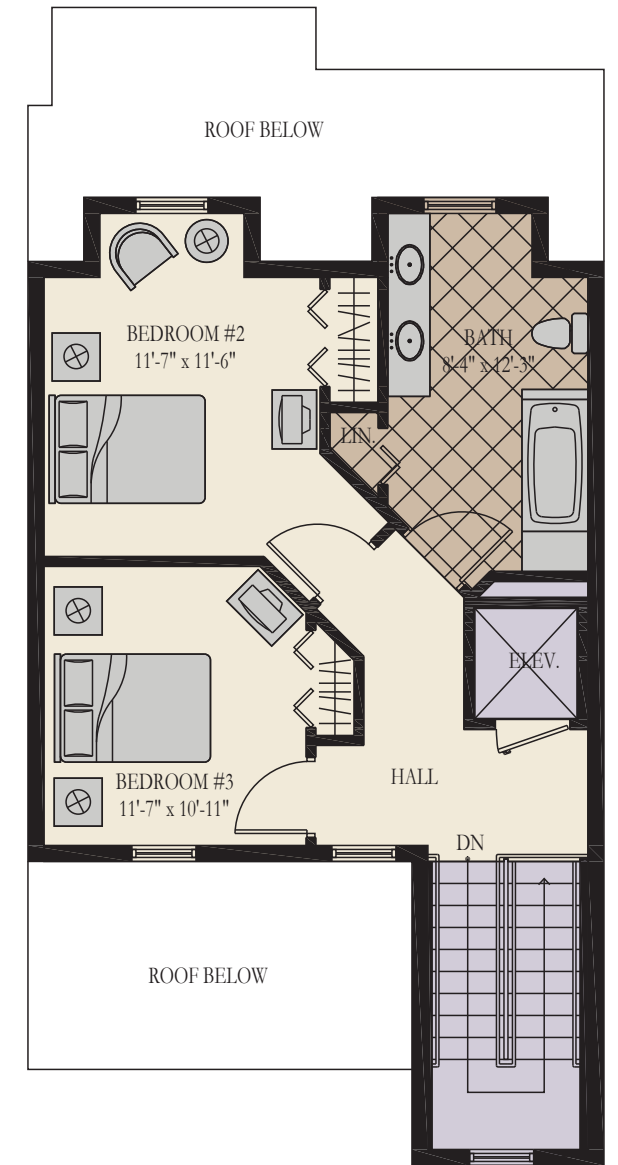
FIRST FLOOR PLAN



SECOND FLOOR PLAN



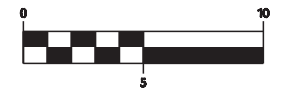
THIRD FLOOR PLAN



FOURTH FLOOR PLAN

VERONA

LIVING AREA = 2996 s.f.
 GARAGE AREA = 487 s.f.
 BALCONY AREA = 293 s.f.
 PATIO AREA = 97 s.f.



Portofino Grande
 AT TOWN CENTER

